



Family Support News



9-15-2023



museum of science and nature

Sleepover Party!



Date: Sat. 9/30 - Sun. 10/1

Time: Sat. 5pm - Sun. 9am

Ages: All ages welcome!

Address: 222 Harrington Way, Worcester

What to Bring: Sleeping bag, pillow, and any other bed time or personal care items you may need

What to Expect: Museum exploration indoors and out, hands on activities, evening snack, wizardry and science, magic wands, sleeping on the floor, morning breakfast, friends, family, and fun!

Attendees: People supported by The Arc of Bristol County are welcome to bring their immediate family to the sleepover or may be dropped off. Please note that any guest who requires medication during the event must have someone stay with them who can administer. The Family Support staff are unable to dispense medications. Staff from the museum and The Arc will be present for the duration of the event.

RSVP: Please use the registration link to sign up. We will start a wait list should we go over the allowable number of guests. Email confirmations will be sent by Friday, September 1st.

SIGN UP NOW



We need a few more friends and families to join us for the Ecotarium sleepover in order to meet the minimum guest requirement!

Sign up today for a magical themed science experience!



DDS SELF-DIRECTED SERVICES



The Massachusetts Department of Developmental Services presents an info session on DDS self-direction programs for adults. Please join DDS to hear how supported people and their families can design individualized services to meet their unique needs.

September 27th, 4:00 - 5:30 PM

For Spanish speaking families: DDS Servicios de Autodirección - Solo Español

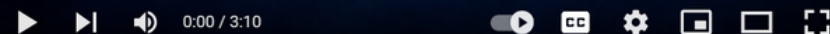
September 20th, 2:00 - 3:30 PM

To register please email Amy.nazaire@mass.gov. You can also visit the DDS website for more information DDS self-directed services.

What is Assistive Technology, and how can it help you or your loved one achieve more independence? Learn from Jennifer Petersen, Director of Supportive Technology at DDS in this 3-minute video. For more info about AT devices and services available through DDS, and about AT Fairs near you at the DDS website: mass.gov/supportive-technology



ASSISTIVE TECHNOLOGY AT THE MASS. DEPARTMENT OF DEVELOPMENTAL SERVICES



Assistive Technology at the Department of Developmental Services



DDSmass
32 subscribers



CALL FOR ARTISTS

The Arc

Let us know!

We need your help to decorate our new Family Support Department office! We're seeking artwork from people of all ages and levels of artistry, any art medium, but especially pieces that we can hang on our walls. Want to contribute?

VIRTUAL TOUR



Check out this social media video that our marketing department created introducing people to our new office building location!



Follow The Arc of Bristol County on Facebook for daily information updates and further resource sharing!



Did you turn 22 during Covid?



If you:

- Reached age 22 between March 10, 2020, and September 1, 2023
- And were entitled to special education services up to age 22.

Then you may be eligible for services now.

Participating state agencies: Massachusetts Commission for the Blind (MCB), Massachusetts Inclusive Concurrent Enrollment Initiative (MAICEI), Department of Developmental Services (DDS), and Massachusetts Rehabilitation Commission (MRC).

To find out more about extra services available to you, call 800-333-0688 or go to www.fcsn.org/transition-support



FEDERATION FOR CHILDREN WITH SPECIAL NEEDS



Middleboro Tourism Committee's
10th Annual

Crantoberfest

Saturday
October 14, 2023
12:00 PM - 5:00 PM

on the
Middleboro Town Hall Front Lawn

Free Admission

Vendors • Food
Miss Crantoberfest Contest
Costume Contest • Kid's Activities • Bake Off

More info at www.DiscoverMiddleborough.com

 @MiddleboroToday  @DiscoverMiddleborough

Fall Office Hours with
The Arc of Bristol County at the
Taunton Family Resource Center



9:30AM - 4:30PM
September 13, 27
October 11, 18
November 15, 29

To schedule a specific meeting time, email Heather Baylies-Grigoreas, The Arc of Bristol County Family Support Outreach Coordinator, at HBayliesGrigoreas@arcnbc.org. Walk-ins are also welcome.

The Arc of Bristol County is a Family Support Center, contracted by the Massachusetts Department of Developmental Services, to assist people and families of all ages with intellectual/developmental disabilities and autism spectrum disorders.

LEGO Free Build



Thursday, September 28th

4:00-7:00

LEGO and Cake Pop activities are brought to you by Youth Services at the Lakeville Public Library. Click the graphics for more information.

Cake Pops!!!

Tuesday, October 10th
at 6:30

**Registration is
Required**

3rd Grade & Up

BAILEY'S TEAM for AUTISM

presents

Celebrating Art & Autism



Jellyfish created by Julia Sposato

Work by artists with autism will be on display

SEPTEMBER 1 - 30



31 North Washington Street, North Attleboro, Massachusetts

On-line Auction will begin Thursday, September 14th at 6:30 p.m. through Saturday, September 23rd at 5:00 p.m.

Select pieces of art will be available for sale throughout the month of September.

Proceeds from this event will support Bailey's Team for Autism, and all participating artists.

Local Resource
Spotlight!



THE FRIENDSHIP PROJECT

Creating friendships among children
with autism and other disabilities.



The Friendship Project is a group of local families who get together for social and recreational meetups to help foster new friendships for children and teens with autism and other disabilities. Past events have included sensory friendly Capron Park Zoo visits, an annual Christmas party, trunk-or-treating, hayrides, museum and trampoline park visits, and much more. Follow their Facebook page to stay up to date on future opportunities.

Ask the
Advocates!

The Arc

Click to submit
a question or
share an idea
for a future
workshop
topic!



Angela & Nicole

Parent and caregiver involvement is vital to the success of a cohesive team effort when planning a child's IEP and should start as early as possible. Many parents are uncertain of how and what they can present to the IEP team to effectively portray both their concerns and aspirations for their child. In a collaborative IEP team meeting there is open discussion that must start with the family's and student's visions. If the student can be included in their IEP process, that is an exceptional addition to the team discussion! Always know that the vision statement is the driving force of the IEP and the goals and benchmarks of that IEP should all be encompassing around that vision of what the family and student sees for their future endeavors.

Also keep in mind all aspects of post-graduate life including independent living, job aspirations, building and maintaining relationships, and more!

Need help figuring out what to say or how to effectively work with your student's IEP team? We can help! Reach out to Angela at AFerreira@arcnbc.org or Nicole Perry at NParry@arcnbc.org.



Angela & Nicole
Educational Consultants

